

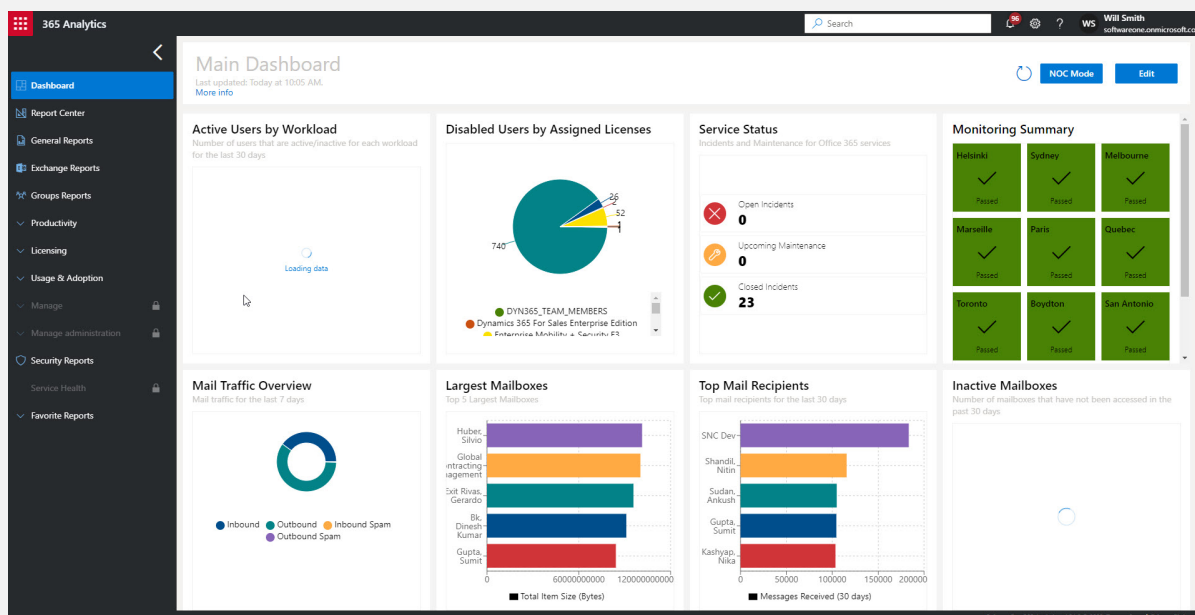
PyraCloud 365 Analytics

For complete visibility into your Microsoft Office 365 Environment

Microsoft Office 365 is an efficient, agile and scalable platform. However, if you don't have visibility and control of your Microsoft Office 365 environment, then how can you guarantee that your investment has been returned, either financially or through productivity improvements?

In order to achieve complete management, you need full visibility into your Microsoft Office 365 environment with comprehensive insights and actionable data.

PyraCloud 365 Analytics enables you to gain deeper operational control and visibility of your Microsoft Office 365 environment. It provides actionable insight around usage, adoption, licenses, subscriptions as well as security so you can avoid risks and optimize your environment.



Why 365 Analytics?

Whether you have one tenant or hundreds, 365 Analytics provides comprehensive insights into your Microsoft 365 environment. It enables you to:



Improve Adoption & ROI

Track usage and activity across all key workloads in Microsoft Office 365 to monitor and encourage adoption. Focus training efforts towards users with low adoption.



Optimize Costs

Identify inactive users and non-utilized services from high-value licenses. Highlight overspend on un-assigned licenses. Buy only what you need, and use all that you buy.



Monitor and Protect Data

Easily view permissions. Track any changes or anomalies with Mobile Devices, Licenses and Subscriptions, Service/ Tenant Status, and Spam and Malware.



Simplify Reporting

Detailed Office 365 analytics for monitoring service adoption, license management, mail flow, security settings, permissions, storage optimization, and more.

PyraCloud 365 Analytics

365 Analytics provides detailed Microsoft Office 365 Analytics for monitoring service adoption, license management, mail flow, security settings and much more.

Key Features:

- › **Infinite report creation capabilities:** Create new reports or customize any of the 40+ system reports to include data relevant to you.
- › **Multi data source reports** - combine multiple data sources into a single report e.g. Mailbox traffic and Teams usage.
- › **Schedule, share and export reports:** Simplify reporting and save time by leverage business intelligence. Encourage proactive reviews of your tenant by scheduling reports, exporting them to pdf or csv and sharing them throughout your organization.
- › **Multi-tenant support:** Turn any reports into a multi-tenant report. Import or export reports across tenant boundaries through shareable JSON files or combine data from multiple tenants into a single report
- › **Policy management of reporting:** Provide granular control over the data users can see in reports.
- › **Customizable Dashboards:** Showcase useful metrics with dashboard that automatically refresh and allow you to drill down for additional detail. Dashboards can be turned into a visual display for a help desk, call center, or network operations center.
- › **Advanced filtering and sorting:** Use filters to define the precise data fields you want. Save filtered views for fast, repeatable analysis.
- › **Single Interface:** Perform Office 365 management and reporting tasks within a single interface.
- › **Tenant Reports:** Stay updated on any service incidents or maintenance which could affect your tenant.
- › **Highly customizable:** Report on any Azure AD attribute using the powerful 365 Analytics Report Centre toolset.
- › **Business Manager Dashboard Views:** Allows a business manager to track their direct reports' engagement with Microsoft Office 365 capabilities (Mail, Teams, Skype, ODFB, EXO) over time to help users become more efficient and effective.
- › **Role Based Access Control:** Set up as many user accounts as you need. Give the right people the right information using our sophisticated permissions settings.
- › **Trend Analysis:** Unlimited historical data storage for reporting data.
- › **Flexible reporting formatting:** View your data in table format or choose a chart type that best highlights your data such as Pivot, Heatmap, Bar, Line and Pie charts. You can also customize the layout.
- › **Custom Report Builder:** Generate bespoke reports by selecting the data fields you want and applying filters to get the information relevant to you.
- › **Personal reports:** Flexibility to create, review and test reports prior to publishing them to your business.

ABOUT PYRACLOUD

PyraCloud is a digital platform that provides customers with data-driven, actionable intelligence to manage and optimize their software and cloud spend.