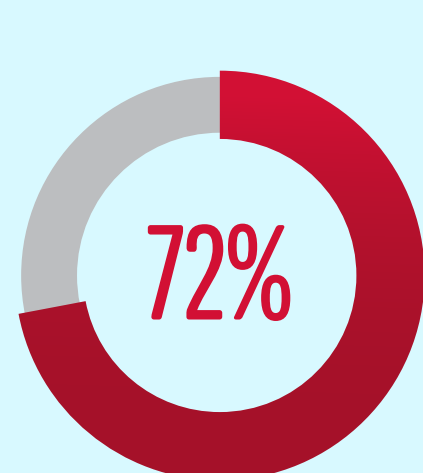
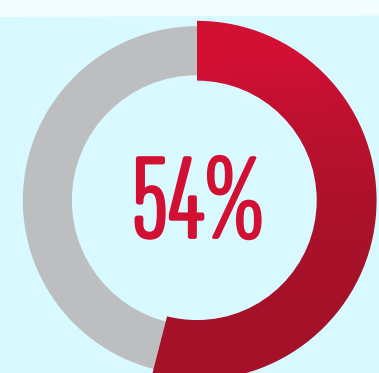


PLAN YOUR JOURNEY TO SAP S/4HANA

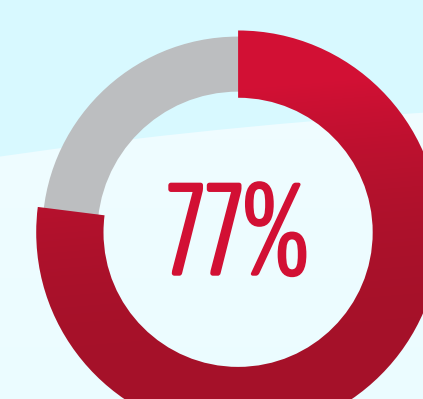
S/4HANA is the next generation SAP ERP that will transform your business using new, inventive ways that accelerate growth and productivity. Moving to S/4HANA can be a challenge, but with a clear strategy in place, your transition will be a smooth one. Consider where you want your business to go and how you plan to tackle any bumps in the road—so you can reach your target destination on schedule, well before the 2027 ECC end of support deadline.



72% OF CUSTOMERS ARE MOVING TO THE CLOUD*



54% OF CUSTOMERS PLAN TO DEPLOY S/4HANA BY 2022*



77% OF SAP USERS WILL USE AN SAP PARTNER TO TRANSFORM* - US OR GLOBAL



WHICH PATH WILL YOU CHOOSE?

The first step on your journey to S/4HANA is understanding what implementation options are available and how they align with your business needs, in addition to considering areas that might need improving—now and in the future.

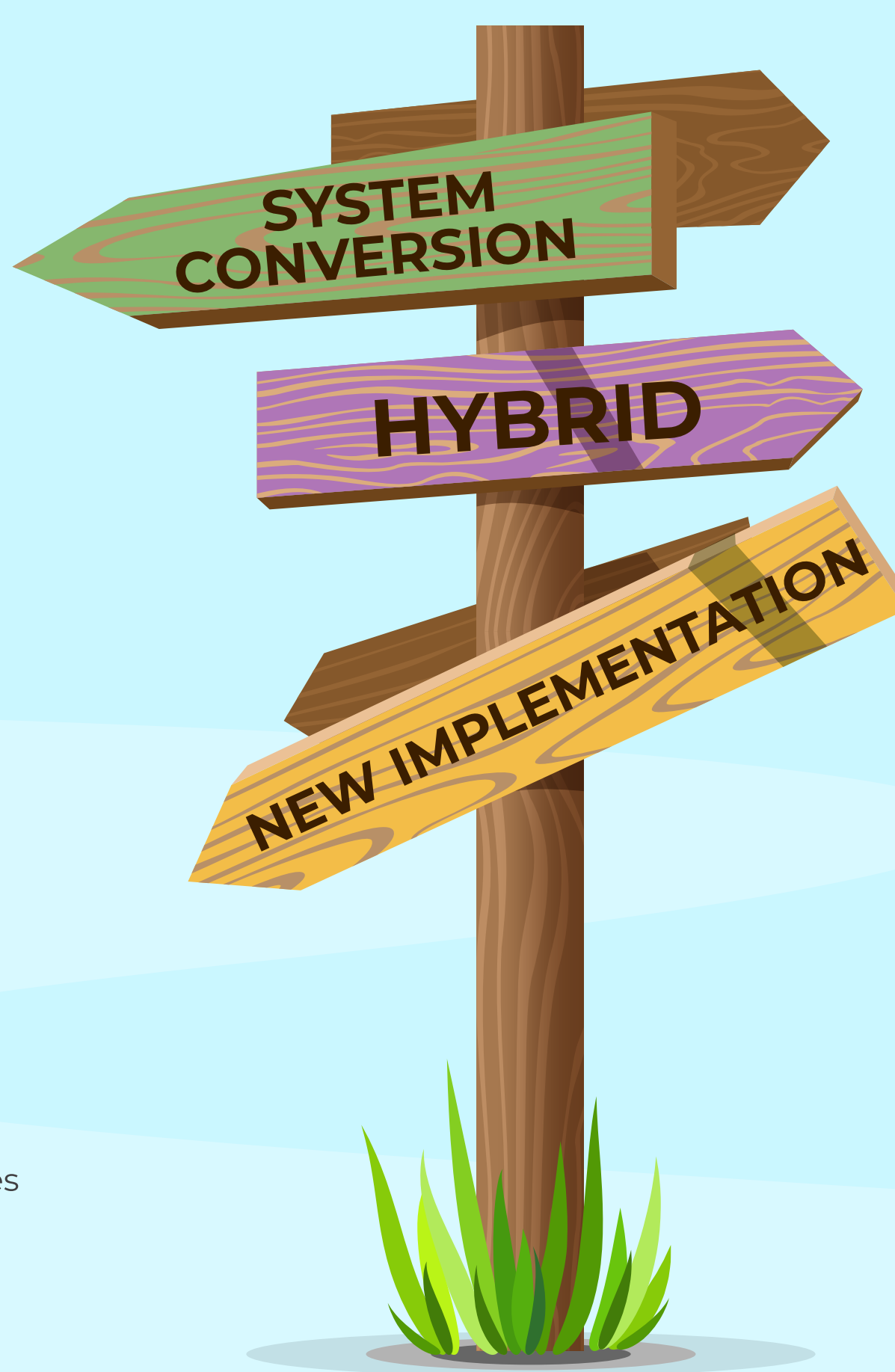
= YES = NO

SYSTEM CONVERSION UPGRADE FROM AN EXISTING SETUP

- You are on the latest SAP release
- You have converted to Unicode
- You can move to S/4HANA in a one-step procedure
- Current processes support your long-term strategy
- You need to take advantage of new S/4HANA business processes
- Plan to take over existing custom applications
- Landscape is a key value driver for S/4HANA adoption
- You want to consolidate SAP systems
- You want previous transactional data to be available in S/4HANA
- You have business funding

NEW IMPLEMENTATION BUILD NEW FROM THE GROUND UP

- You are on the latest SAP release
- You converted to Unicode
- You can move to S/4HANA in a one-step procedure
- Current processes support your long-term strategy
- You need to take advantage of new S/4HANA processes
- You're going to return to SAP standard (best practices)
- Landscape is a key value driver for S/4HANA adoption
- You want to consolidate SAP systems
- You have technical/IT funding



HYBRID MIGRATE SOME EXISTING PROCESSES + INCORPORATE NEW INTEGRATION

- You are on the latest SAP release
- You have converted to Unicode
- You can move to S/4HANA in a one-step procedure
- Current processes support your long-term strategy
- You need to take advantage of new S/4HANA business processes
- Plan to take over existing custom applications
- Landscape is a key value driver for S/4HANA adoption
- You want to consolidate SAP systems
- You have business funding
- You want to be selective on the transactional data you want available

LET SOFTWAREONE BE YOUR GUIDE

The right path to S/4HANA may seem uncertain, but SoftwareONE will help you navigate the best route for your organization.

100%
SAP + Cloud Managed Services

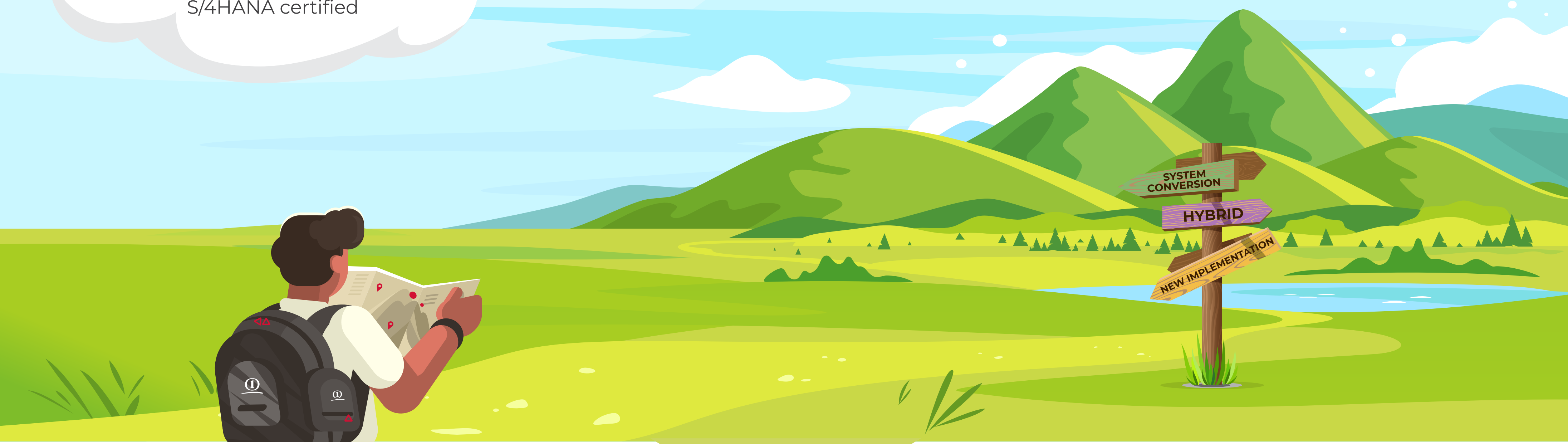
10M+
users moved to the cloud

100%
of your cloud migration

40+
SAP to Cloud Migrations

100%
consultants are SAP
S/4HANA certified

75%+
OF CUSTOMERS SAID THE KEY DRIVING
FACTOR TO MOVE TO S/4HANA WAS TO
LEVERAGE NEW TECHNOLOGIES AND
ENABLE DIGITAL TRANSFORMATION



CONTINUE ON YOUR SAP S/4HANA JOURNEY

SoftwareONE's SAP Technology Services practice strives to bring the value of Hyperscaler cloud platforms to existing and new SAP customers. Our goal is to provide best-in-class advisory & delivery services unlocking business value in existing SAP investments as well as the next generation S/4HANA solution. We can assist in all aspects of your journey; from making informed decisions, to implementation to managing your SAP cloud environment. Pyracloud and power connect can manage licensing in your hyperscaler cloud.

[REGISTER HERE FOR YOUR JOURNEY TO S/4 HANA](#)

SAP® Recognized Expertise
SAP S/4HANA*

Gold
Microsoft
Partner
Microsoft

Azure
Expert
MSP

SAP
Gold
Partner

aws partner
network competency
SAP

- SAP gold partner in Australia (through SAP BNV Consulting, a SoftwareONE Company), SAP silver partner in Singapore
- Extensive certification and broad experience in S/4HANA technologies while delivering SAP on Azure and AWS since 2015
- Integrated with the Amazon Consulting Partner Network

- 30-year+ relationship with Microsoft & Azure Expert MSP as well as a global Microsoft partner
- Interface between customers, SAP, and Hyperscalers
- Uniquely positioned for SAP in the cloud due to close alignment with Microsoft as their largest partner globally for Azure consumption